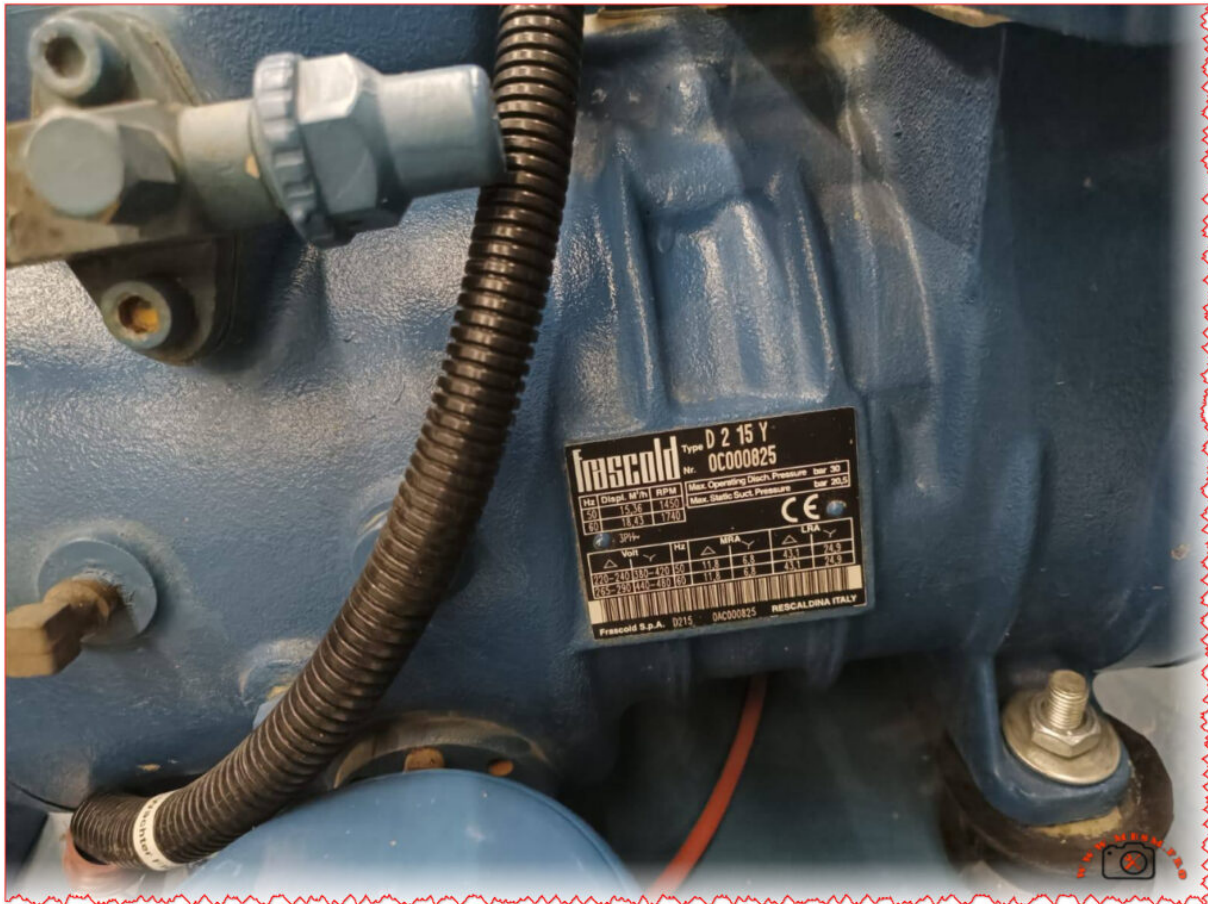


# Frascold D2-15Y / D2-15.1Y

**Site:** Mbsmpro

**Date:** December 23, 2025 | **Author:** www.mbsmpro.com

**URL:** <https://mbsmpro.com/frascold-d2-15y-semi-hermetic-compressor/>





## **Frascold D2 15Y: semi-hermetic compressor for reliable commercial refrigeration**

### **General overview**

The **Frascold D2 15Y** is a two-cylinder, semi-hermetic reciprocating compressor designed for low- and medium-temperature commercial and industrial refrigeration duties. With a displacement of about 15.4 m<sup>3</sup>/h at 50 Hz and a nominal motor power of 1.5 kW (2 HP), it fits perfectly in small to medium cold rooms, display cabinets and process coolers.

This model belongs to Frascold's D series, known for compact cast-iron bodies, quiet operation and high energy efficiency under EN12900 test conditions. The D2 15Y can be supplied as a bare compressor or integrated into silent condensing units, giving installers flexibility in plant design.

### **Key technical features**

Frascold's data show that the D2 15Y delivers around 6–7 kW of cooling capacity with R404A in typical low-temperature duty, depending on evaporating and condensing conditions. The compressor is charged with POE oil (approx. 1.1 L) and uses robust suction and discharge service valves to facilitate commissioning and service.

Electrical supply options usually cover 220–240 V/3/50 Hz and 380–420 V/3/50 Hz (with corresponding 60 Hz variants), allowing use across most European three-phase networks. The unit is compatible with multiple refrigerants, including R22, R134a, R404A, R507A, R407A/F, and new lower-GWP blends such as R448A and R449A.

## **Table - Main data for Frascold D2 15Y**

<b>Parameter</b>	<b>Typical value</b>
Model	D2-15Y / D2-15.1Y
Technology	Semi-hermetic reciprocating, 2 cylinders
Displacement (50 Hz)	15.36 m <sup>3</sup> /h
Nominal motor power	1.5 kW – 2 HP
Oil charge	≈ 1.1 L POE oil
Typical cooling capacity	≈ 6.7 kW with R404A (EN12900 reference condition)
Application	Low/medium-temperature refrigeration (LBP/MBP)

<b>Parameter</b>	<b>Typical value</b>
Compatible refrigerants	R22, R134a, R404A, R507A, R407A/F, R448A, R449A

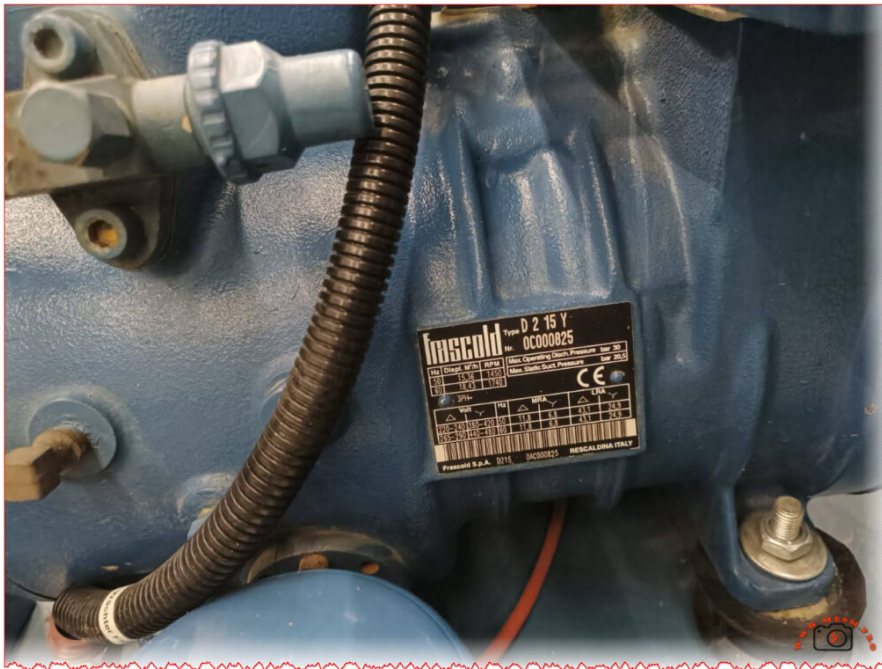
## **Benefits for HVACR professionals**

Semi-hermetic design means the D2 15Y can be opened for internal inspection and overhaul, extending service life compared with fully hermetic units in demanding duty cycles. The compressor is also suitable for operation with variable-frequency drives, enabling smooth capacity modulation from part-load to peak demand while improving seasonal efficiency.

For contractors and wholesalers, the D2 15Y's widespread availability and clear documentation (including a dedicated PDF datasheet and full catalog) simplify selection, replacement of legacy units and stocking of spare parts. Its broad refrigerant approval list helps systems transition towards lower-GWP blends without changing the compressor platform.







[D2-15.1YDownload](#)

[Fracold-Reciprocating-2 catalogDownload](#)

## Latest Articles

- [Guide de Dépannage de la Carte Inverter : Climatiseur Kolin KSM-IW20WAE](#)
- [RCFF-2HP Capillary Tube for a Samsung 18000 BTU air conditioner](#)
- [Carbon brushes washing machine motors](#)
- [Chauffe-eau Junkers : Restauration d'un Classique](#)
- [WS57H Compressor, 1/6 hp, Capacitor Requirement 4mf](#)
- [Hisense inverter expert, installtion](#)
- [Copeland D3DS5-100X 10 HP Freezer Compressor](#)
- [Bitzer 6G-30.2Y: The High-Performance 30 HP Semi-Hermetic](#)
- [Réparer un chauffe-eau à gaz Olympic 6L](#)
- [Best piping practices for semi-hermetic systems](#)
- [Core ChauffeEau Junkers Mid-1980s to Late 1990s](#)
- [Not recommended R410A to R407c](#)
- [Details of refrigerant R134a](#)
- [The electrical circuit for a timer-based steam refrigerator is an interesting one](#)
- [Changing Filter 1/5 Hp](#)
- [1/5 HP Compressor oil change: How much and how to do it right](#)
- [Deep cleaning AC units from A to Z... that's our craft](#)
- [Plumbing Fittings Explained](#)
- [Can the GL80 compressor be installed in place of the GL90?](#)
- [The process of replacing the air conditioner compressor is successful, and it is working as it was before ?](#)