

[Compressor, Jiaxipera, TT1113GY, 1/5 hp](#)

Category: Refrigeration

written by www.mbsmpro.com | January 13, 2026



The Jiaxipera TT1113GY is a high-performance hermetic compressor engineered for Low Back Pressure applications using R600a (Isobutane). Featuring a 11.3 cm³ displacement and a cooling capacity of 183 Watts, it represents the gold standard for modern energy-efficient refrigeration, offering exceptional reliability and reduced acoustic emissions in the domestic market.

[Free money Copper](#)

Category: Mbsmpro

written by www.mbsmpro.com | January 13, 2026



In the world of refrigeration maintenance, a pile of discarded components tells a story of hard work and technical precision. Every replaced filter drier represents a saved compressor, and every vacuum pump represents a system brought down to perfect microns. This guide explores the technical value behind HVAC scrap and the essential tools used in the trade.

[855AWP-1A-C2 30A power relay](#)

Category: Electronic

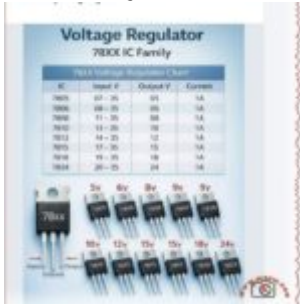
written by www.mbsmpro.com | January 13, 2026



The Song Chuan 855AWP-1A-C2 is a high-performance 30A power relay designed for demanding electrical environments requiring robust 12V DC coil actuation. Primarily used in HVAC systems and heavy-duty industrial controls, this relay ensures reliable switching for loads up to 240VAC. This comprehensive guide provides essential technical insights, wiring configurations, and engineering advice for professionals.

78XX IC Family, Voltage Regulator

Category: Electronic
written by www.mbsmpro.com | January 13, 2026



The 78XX series is the industry-standard family of linear voltage regulators, providing fixed regulated output from 5V to 24V at up to 1.5A. This comprehensive guide covers the 7805, 7812, 7815, and 7824 variants, their specifications, internal architecture, thermal design, practical circuit applications, and professional troubleshooting tips for reliable power supply design.

Kelvinator Inverter AC, Error

Category: Air Conditioner
written by www.mbsmpro.com | January 13, 2026

inverter display to show Code List

CODE	ERROR DESCRIPTION
E0	Indoor machine ES fault
E1	Indoor fan fault
E2	Indoor Fan Zero-crossing detection abnormal
E3	Indoor coil sensor fault
E4	Indoor ambient temperature sensor fault
E5	Outdoor ES fault
E6	Indoor and outdoor machine communication fault
F1	Compressor starting abnormal phase failure, reverse
F2	Compressor not at stop fault
F3	IPM module fault
F4	Compressor shell not faultprotection
F5	Discharge temperature sensor fault
F6	Suction temperature sensor fault
F7	Outdoor coil temperature sensor fault
F8	Outdoor ambient temperature sensor fault
F9	Outdoor DC fan fault
F8	Outdoor communication fault

When your Kelvinator inverter split air conditioner displays an error code (E1, E2, E3, F1, F2, F3, etc.), it is signaling a specific system fault. This comprehensive guide explains every major error code—from sensor failures and communication breakdowns to compressor and power module protection triggers—and provides professional troubleshooting steps.

Transistor IGBT, G80N60UFD, 600 V, 80 A

Category: Electronic

written by www.mbsmpro.com | January 13, 2026

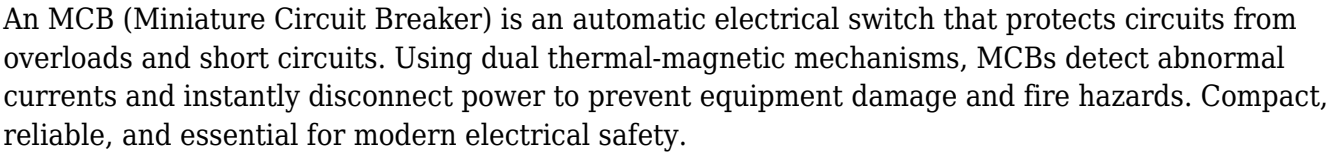


The G80N60UFD is an ultrafast 600 V, 80 A insulated-gate bipolar transistor in a robust TO-3P package, designed for high-efficiency industrial inverters. Combining MOSFET-like gate control with low saturation voltage and a co-pack fast recovery diode, it is ideal for motor drives, induction heating, welding machines, UPS and PFC stages.

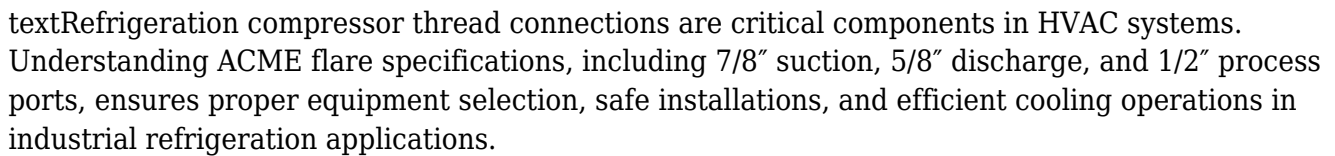
MCB miniature circuit breaker thermal magnetic protection mechanism

Category: Global Electric

written by www.mbsmpro.com | January 13, 2026



Category: Equipment
written by www.mbsmpro.com | January 13, 2026



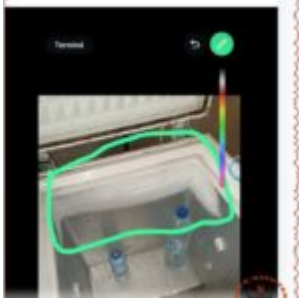
Category: Refrigeration
written by www.mbsmpro.com | January 13, 2026

“The STC-9200 digital temperature controller is a professional-grade thermostat designed for industrial refrigeration and freezing applications. This advanced multi-stage controller features precise temperature regulation from -50°C to +50°C, integrated defrost management, and robust relay capacity for compressor control, making it ideal for commercial cooling systems and display cases.”

The 5 Pillars of Refrigeration Diagnosis: **Professional HVAC**

Category: Refrigeration

written by www.mbsmpro.com | January 13, 2026



Professional HVAC technicians rely on five critical diagnostic pillars: suction pressure, discharge pressure, superheat, subcooling, and saturation temperature relationships. Mastering these five measurements eliminates guesswork, accurately identifies refrigeration problems, and ensures proper system troubleshooting without expensive callbacks or equipment damage.