

Compressor, Jiaxipera, TT1113GY, 1/5 hp

Category: Refrigeration

written by www.mbsmpro.com | January 13, 2026



The Jiaxipera TT1113GY is a high-performance hermetic compressor engineered for Low Back Pressure applications using R600a (Isobutane). Featuring a 11.3 cm³ displacement and a cooling capacity of 183 Watts, it represents the gold standard for modern energy-efficient refrigeration, offering exceptional reliability and reduced acoustic emissions in the domestic market.

STC-9200 Temperature Controller

Category: Refrigeration

written by www.mbsmpro.com | January 13, 2026



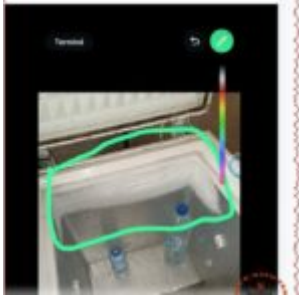
"The STC-9200 digital temperature controller is a professional-grade thermostat designed for industrial refrigeration and freezing applications. This advanced multi-stage controller features precise temperature regulation from -50°C to +50°C, integrated defrost management, and robust relay capacity for compressor control, making it ideal for commercial cooling systems and display cases."

The 5 Pillars of Refrigeration Diagnosis:

Professional HVAC

Category: Refrigeration

written by www.mbsmpro.com | January 13, 2026



Professional HVAC technicians rely on five critical diagnostic pillars: suction pressure, discharge pressure, superheat, subcooling, and saturation temperature relationships. Mastering these five measurements eliminates guesswork, accurately identifies refrigeration problems, and ensures proper system troubleshooting without expensive callbacks or equipment damage.

SECOP SC21G COMPRESSOR

Category: Refrigeration

written by www.mbsmpro.com | January 13, 2026



Secop SC21G is a high-performance hermetic reciprocating compressor designed for commercial refrigeration and freezing applications using R134a refrigerant. This guide covers detailed specifications, technical parameters, and installation requirements for 220-240V/50Hz systems at up to 1.3 amperes.

Samsung MSE4A1Q-L1G AK1, hermetic reciprocating refrigerator compressor

Category: Refrigeration

written by www.mbsmpro.com | January 13, 2026

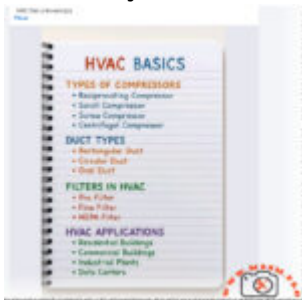


The Samsung MSE4A1Q-L1G AK1 is a hermetic reciprocating refrigerator compressor designed for domestic LBP applications with R600a refrigerant and a nominal cooling capacity around 175–180 W at ASHRAE conditions, equivalent to roughly 1/4 hp. Engineers value this model for its efficient RSCR motor and robust design.

HVAC Basics: Compressors, Ducts, Filters, and Real-World Applications

Category: Refrigeration

written by www.mbsmpro.com | January 13, 2026



HVAC basics start with understanding how compressors, ducts, and filters work together to move heat and clean air in any building. From reciprocating and scroll compressors to rectangular and circular ducts, each choice affects comfort, energy efficiency, and reliability in residential, commercial, industrial, and data center applications.

Copper Pipe Flaring: Common Mistakes and How to Avoid Them in HVAC and Plumbing Installations

Category: Refrigeration

written by www.mbsmpro.com | January 13, 2026



Mbsmpro.com, Copper Pipe, Flaring, HVAC, Plumbing, R600a, Mini-Split, Leak Prevention, Soft Copper, Flaring Block, 1/4", 3/8", 1/2", 5/8", Refrigerant Line

Embraco FMXY9C Compressor: R600a, 1/6 HP

Category: Refrigeration

written by www.mbsmpro.com | January 13, 2026



Mbsmpro.com, Compressor, FMXY9C, Embraco, R600a, 1/6 hp, Cooling, 220-240V, 1Ph 50Hz, LBP, Fullmotion, Inverter, -35°C to -10°C, CE UL, Austria

Mechanical Defrost Timer LUFO HPT-02: Wiring

Category: Refrigeration

written by www.mbsmpro.com | January 13, 2026



The LUFO HPT-02 mechanical timer alternates between defrost and cooling cycles in refrigeration systems. Rated at 120 VAC and 15A, it offers reliable control with a simple 4-terminal wiring setup.

Jiaxipera VTH1113Y Compressor: R600a

Category: Refrigeration

written by www.mbsmpro.com | January 13, 2026



Jiaxipera VTH1113Y is a high-efficiency inverter compressor using R600a refrigerant. Designed for LBP applications, it operates on 220-240V and offers quiet, reliable cooling for household refrigerators.