

# Can the GL80 compressor be installed in place of the GL90?

Category: Refrigeration

written by [www.mbsmpro.com](http://www.mbsmpro.com) | April 12, 2026



The main difference is the winding material: the GL80 uses aluminum coils, while the GL70 uses copper. Performance-wise, the GL80 is suitable for an upright deep freezer, whereas the GL70 is best for a 12ft double-door refrigerator

**“The technical difference between the two compressors, manufactured by ZEM or ACC, lies primarily in the horsepower (HP) and displacement volume:**

**GL80: Has a slightly lower capacity, rated at approximately 1/5 HP**

**GL90: Typically rated at 1/4 HP (or equivalent, depending on the specific model)**

**Technical Conclusion: Compressor Interchanges**

---

- 1. Replacing GL80 by GL90 yes**
- 2. Replacing GL90 by GL80 non**
- 3. Replacing GL80 by GL70 non**
- 4. Replacing GL70 by GL80 yes**

ZMG

EGIL9

T 0920

R134

20C

W 501 Z



MAIL OF EGYPT

432

719673

CF



## [The process of replacing the air conditioner compressor is successful, and it is working as it was before ?](#)

Category: Refrigeration

written by [www.mbsmpro.com](http://www.mbsmpro.com) | April 12, 2026



**“The process of replacing the air conditioner compressor is successful, and it is working as it was before.”**

Alternatively, if you are asking whether the process *is* viable, it can be translated as: **“Is replacing the air conditioner compressor effective, and will it work as well as it did before?”**

---

### **Key Points regarding Compressor Replacement:**

If you are considering this repair, here are a few things to keep in mind to ensure it works “as it was”:

- **Matching Specifications:** The new compressor must have the exact same cooling capacity (BTU) and electrical specifications as the original.
- **System Flushing:** It is vital to flush the refrigerant lines to remove any contaminants or burnt oil from the old compressor; otherwise, the new one may fail quickly.
- **Vacuumping:** A deep vacuum must be pulled on the system to remove moisture before recharging with gas.
- **Cost-Benefit:** Since the compressor is the “heart” of the AC, the repair can be expensive. If the unit is more than 10 years old, it is often more cost-effective to replace the entire unit.



## [A problem with a Brandt refrigerator: ice forms, it makes a noise, and it stops cooling](#)

Category: Refrigeration

written by [www.mbsmpro.com](http://www.mbsmpro.com) | April 12, 2026



The issues you are experiencing with your Brandt refrigerator (ice buildup, unusual noise, and poor cooling) indicate a failure in the No Frost defrost system. Since a specialist was unable to fix it, the fault may have been misdiagnosed.

# The refrigerator has a problem, it works for a minute and then shuts off

Category: Refrigeration

written by [www.mbsmpro.com](http://www.mbsmpro.com) | April 12, 2026



Our technical investigation revealed a dual issue. The system was suffering from a **restricted filter drier**, causing a blockage that choked the cooling cycle. This strain had also compromised the motor's starting components.

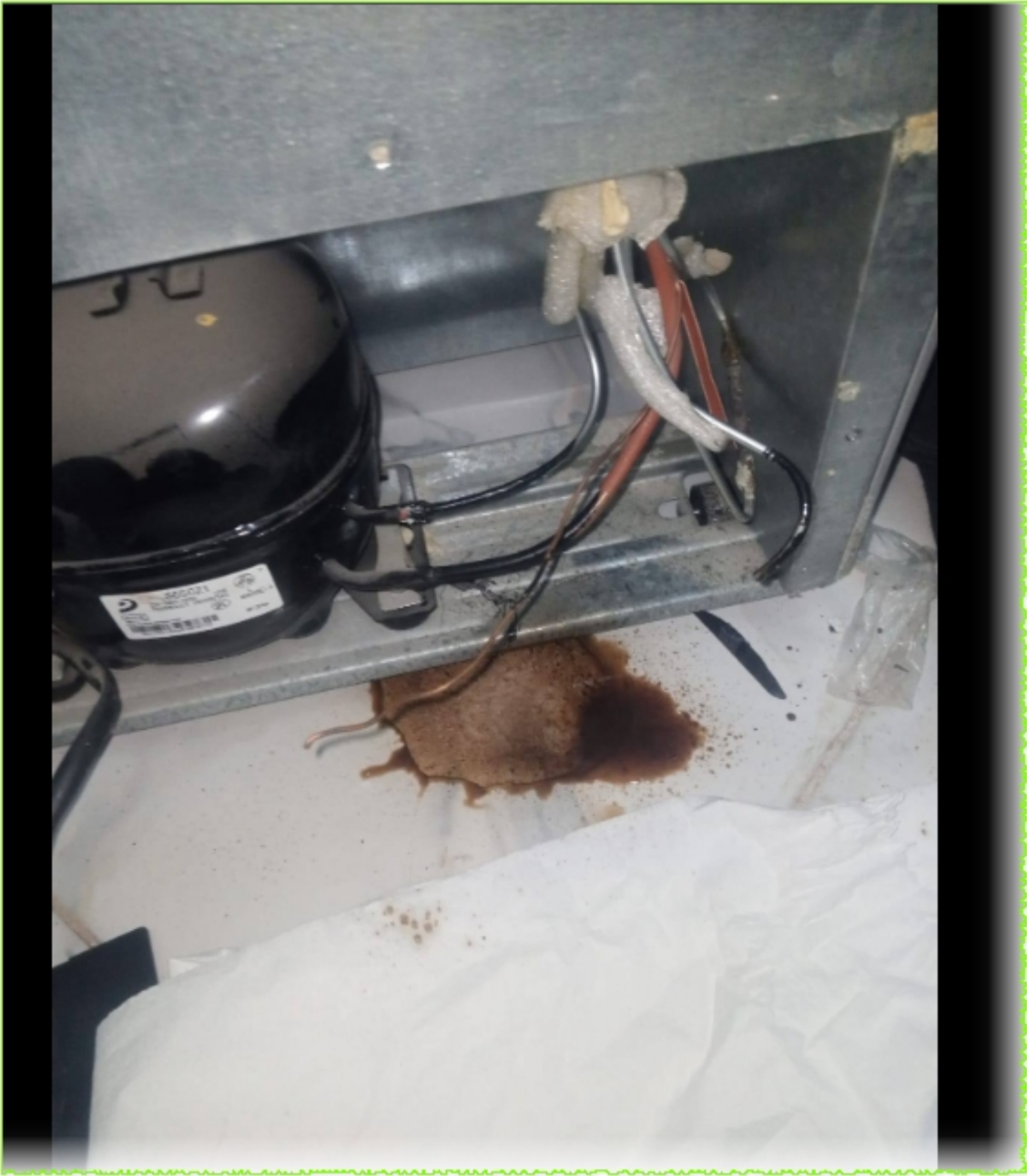
## Technical Specifications

Feature	Specification
Model	S65CZ1
Brand	Panasonic
Refrigerant	<b>R134a</b>
Power Supply	220-240V / 50Hz
Cooling Capacity	Approximately <b>165W</b> (at ASHRAE conditions)
Horsepower	<b>1/5 HP</b>
Displacement	6.5 cm <sup>3</sup>
Motor Type	RSIR (Resistive Start-Inductive Run)











**Our intervention included:**

- **System Clearing:** Replacing the clogged filter to allow the refrigerant to flow freely once again.
- **Electrical Upgrade:** Installing a brand-new high-quality “Starting Kit” (Relay/Overload) to ensure the compressor starts smoothly every time.
- **The Mbsmpro Promise:** We don’t just fix; we provide peace of mind. This repair is backed by a **full 6-month warranty**.